

Datalogic S.r.l.

Via San Vitalino 13
40012 Calderara di Reno (BO)
Italy
Tel. +39 051 3147011
Fax +39 051 3147205

©2020 Datalogic S.p.A. and/or its affiliates


• All rights reserved. • Without limiting the rights under copyright, no part of this documentation may be reproduced, stored in or introduced into a retrieval system, or transmitted in any form or by any means, or for any purpose, without the express written permission of Datalogic S.p.A. and/or its affiliates. Owners of Datalogic products are hereby granted a non-exclusive, revocable license to reproduce and transmit this documentation for the purchaser's own internal business purposes. Purchaser shall not remove or alter any proprietary notices, including copyright notices, contained in this documentation and shall ensure that all notices appear on any reproductions of the documentation. Should future revisions of this manual be published, you can acquire printed versions by contacting your Datalogic representative. Electronic versions may either be downloadable from the Datalogic website (www.datalogic.com) or provided on appropriate media. If you visit our website and would like to make comments or suggestions about this or other Datalogic publications, please let us know via the "Contact Datalogic" page.

Disclaimer

Datalogic has taken reasonable measures to provide information in this manual that is complete and accurate, however, Datalogic reserves the right to change any specification at any time without prior notice. Datalogic and the Datalogic logo are registered trademarks of Datalogic S.p.A. in many countries, including the U.S.A. and the E.U. Memor is a trademark of Datalogic S.p.A. and/or its affiliates. All other trademarks and brands are property of their respective owners.

Support Through the Website

Datalogic provides several services as well as technical support through its website. Log on to www.datalogic.com.

For quick access, from the home page click on the search icon , and type in the name of the product you're looking for. This allows you access to download Data Sheets, Manuals, Software & Utilities, and Drawings. Hover over the Support & Service menu for access to Services and Technical Support.

Warranty Terms and Conditions

The warranty period is 1 year for the device and 90 days for consumables (e.g. battery, power supply, cable etc.) from date of purchase at our company.

DATALOGIC

memor 10

3-Slot Dock Ethernet Module



Quick Start Guide



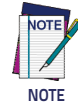
822003960 (Rev. A) Jan. 2020



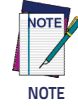
This document is an addendum to the Quick Start Guide (QSG) for this product. See the QSG for additional product information.

©2020 Datalogic S.p.A. and/or its affiliates. All rights reserved. Datalogic and the Datalogic logo are registered trademarks of Datalogic S.p.A. in many countries, including the U.S. and the E.U.

DATALOGIC
www.datalogic.com



Read this manual carefully before performing any type of connection from the terminal to a host PC using the 3-Slot Dock Ethernet Module. The user is responsible for any damages caused by incorrect use of the equipment or by inobservance of the indication supplied in this manual.

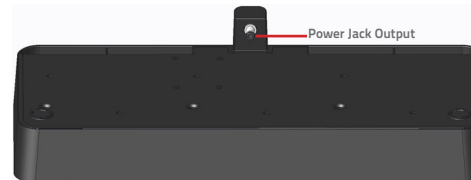
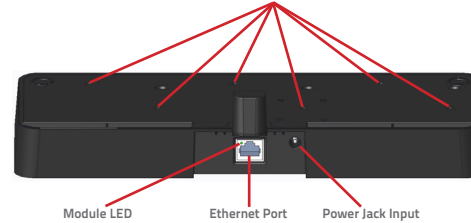


Do not attempt to disassemble the 3-Slot Dock Ethernet Module, as it does not contain parts that can be repaired by the user. Any tampering will invalidate the warranty.

Overview

The 3-Slot Dock Ethernet Module is a snap-on module for 3-slot docks which, paired with a Datalogic mobile computer, builds a reading system for the collection, decoding and transmission of barcoded data. The 3-Slot Dock Ethernet Module is an ethernet communication adapter between the Memor 10s and an ethernet network.

Mounting Screws Access Holes



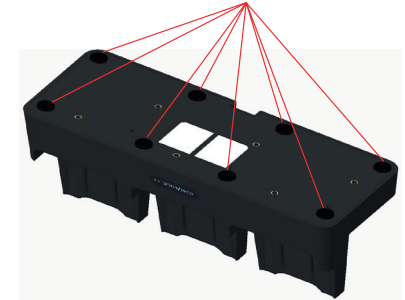
Installation



Installation of the Ethernet Module should always be made with power OFF.

To install the Ethernet Module:

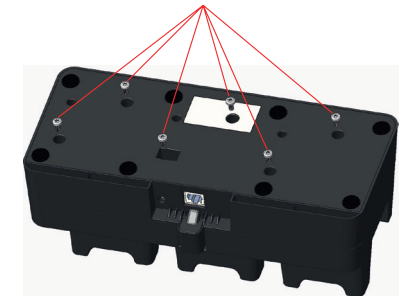
1. Remove all the rubber feet from the Memor 10 3-Slot Dock.



2. Slide the Memor 10 3-Slot Dock to insert the power jack ethernet module plug into the Memor 10 power jack receptacle.

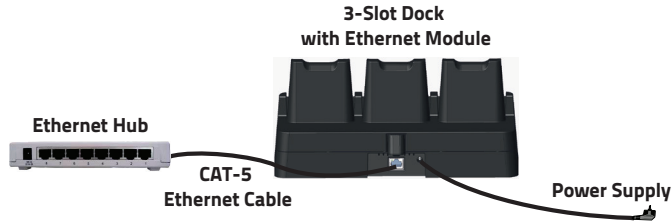


3. Fasten the ethernet module to the Memor 10 3-Slot Dock by 6 M4 machine screws. Insure that the two units are permanently attached together.



Ethernet Connection

1. Download the Memor 10 Ethernet Dock software from the Datalogic developer website <https://developer.datalogic.com/mobile-computers/tools> and install it on your Memor 10.
2. Connect the Ethernet port on the Module to an Ethernet hub or a port on the host device.
3. Connect the power supply jack to the power supply.
4. Insert the Memor 10 into the dock.



LED Indicators

Color	Status
Off	Not connected to ethernet
Green Blinking	Connecting to network
Green Solid	Connected to network

Technical Specifications

Communication Features	
Interface	Ethernet 10/100 Base T
Physical Features	
Dimensions	302 x 128 x 57 mm / 11.9 x 5 x 2.2 in
Weight (without connection cables)	460 g / 16.2 oz
Indicators	Off - not connected Green blinking - network connecting Green solid - network connected
Environmental Features	
Working Temperature	0°C to 40°C
Storage Temperature	-30°C to 70°C
Humidity	5-95% non condensing
Electrostatic discharge EN 61000-4-2	4 KV contact / 8 KV air

FCC Compliance

This equipment has been tested and found to comply with the limits for a Class B digital device, pursuant to part 15 of the FCC Rules. These limits are designed to provide reasonable protection against harmful interference in a residential installation. This equipment generates, uses and can radiate radio frequency energy and, if not installed and used in accordance with the instructions, may cause harmful interference to radio communications. However, there is no guarantee that interference will not occur in a particular installation. If this equipment does cause harmful interference to radio or television reception, which can be determined by turning the equipment off and on, the user is encouraged to try to correct the interference by one or more of the following measures:

- Reorient or relocate the receiving antenna.
- Increase the separation between the equipment and receiver.
- Connect the equipment into an outlet on a circuit different from that to which the receiver is connected.
- Consult the dealer or an experienced radio/ TV technician for help.

This device complies with part 15 of the FCC Rules. Operation is subject to the following two conditions:

1. This device may not cause harmful interference.
2. This device must accept any interference received, including interference that may cause undesired operation.

Any changes or modifications not expressly approved by the party responsible for compliance could void the user's authority to operate the equipment.